

Static Electricity

(Two Studies of Electrostatics)

Goals:

- To become familiar with basic electrostatic phenomena
- To learn the *charge model* and learn to apply it to conductors and insulators
- To understand polarization and the attraction between neutral and charged objects
- To explore quantitatively how the electric force depends upon the distance between charged bodies.

Equipment:

- Sticky tape (*e.g.* Scotch™ brand)
- PVC pipe
- Glass rod
- Wool cloth
- Rabbit fur
- Coulomb's Law Apparatus
- Software: Microsoft Excel

Introduction:

Various civilizations have recorded observations of what we would typically call “static electricity” for thousands of years, dating back to the ancient Greeks and possibly even earlier. They noticed that when pieces of amber were rubbed or polished with animal fur, the amber could attract small bits of straw, even causing them to fly through the air to reach the amber. In the Elizabethan era, the English physician William Gilbert (1544–1603) first referred to this attraction as the “electric” attraction, deriving from the Greek word for amber, *elektron*. From these early beginnings, we have the modern words of *electric*, *electricity*, *electrical*, and so on.

Gilbert was able to determine two “kinds” of electricity. In his terminology, amber, when rubbed with fur, acquires “resinous electricity” and when rubbed with silk, acquires “vitreous electricity.” He noted that pieces of amber with the *same kind* of electricity *repelled* each other and pieces with the *opposite kind attracted* each other.

Years later, the American printer, author, philosopher, diplomat, inventor and scientist Benjamin Franklin (1706–1790) proposed that these two “kinds” of **electric charge** be named positive and negative, symbolized by (+) and (–), respectively. Franklin claimed that all materials possess a single kind of electrical “fluid” and that the action of rubbing one material against another did not create an electrical charge, but merely transferred some of this “fluid” from one body to the other. He presumed that **neutral** bodies consisted of equal numbers of positive and negative charges, and that rubbing transferred some positive charges from one body to another, leaving the first body with a **net** negative charged and the other with a net positive charge. He again confirmed that the same type of charges were found to repel each other while opposite charges were found to attract each other.

Through a very careful set of experiments involving a torsion balance and equally charged pith balls, the French engineer Charles Coulomb (1736–1806) was able to *quantify* the electric attraction and repulsion in the form we now call “Coulomb’s Law”. Coulomb’s law describes the force between two charged particles, labeled 1 and 2, and can be stated:

1. If two point particles, having charges q_1 and q_2 respectively, are a distance r apart, the charges exert forces on each other with a magnitude of:

$$|\vec{F}_{1\text{on}2}| = |\vec{F}_{2\text{on}1}| = k \frac{|q_1||q_2|}{r^2} \quad (\text{Eq. 1})$$

These forces are equal in magnitude, but opposite in direction

2. The forces are directed along the straight line drawn between the two charges. The forces are mutually attractive if the charges are opposite, and mutually repulsive for like charges.

We will not repeat Coulomb’s experiment exactly, but we can make some qualitative observations using everyday items such as sticky tape, plastic pens, and metal keys, as well as some quantitative measurements with pith balls. With equipment as simple as this, we can repeat the same types of experiments that natural philosophers, inventors, and scientists have been performing for over 2400 years.

Today, the process of rubbing two materials together to transfer some amount of electric charge is known as **triboelectric charging**. Table 1 below indicates the relative ability of a material to gain or lose charges due to rubbing. More plusses (+) next to a material in the chart indicates a greater ability to obtain a net positive charge. More minuses (–) next to a material in the chart indicates a greater ability to obtain a net negative charge.

In general when two objects listed in the chart are rubbed together, the material listed higher in the chart becomes positively charged and the material listed lower in the chart becomes negatively charged. The greater the separation of the materials in the chart, the greater the magnitude of the charge transferred.

Material	Relative charging with rubbing
rabbit fur	+++++
glass	+++++
human hair	++++
nylon/wool	+++
silk	++
paper	+
cotton	–
wood	--
amber	---
rubber	----
PVC	-----
Teflon	-----

Table 1 Triboelectric charging

We can also characterize how easily charge can flow along or through a material. Materials that easily allow charge to flow through them are known as **conductors**. Materials through which charge cannot easily flow are known as **insulators**. We understand this distinction today in terms of the **mobility** of **charge carriers** within the material. For instance, in most metals (which are often good conductors), valence electrons are free to move anywhere throughout the metal, and thus can easily transfer charge from one location to another within the metal. In insulating materials, on the other hand, there are relatively few free charge carriers, and so excess charge tends to stay where it's put on the surface of an insulator. At an atomic level, though, we can still envision a process by which the electrons orbiting their nuclei in an insulator can shift somewhat to the side due to external influences, a process known as **polarization**, and depicted in Figure 1. In the first portion of today's experiment, you will explore the qualitative aspects of the electrostatic interaction between insulators, conductors, and differently charged objects.

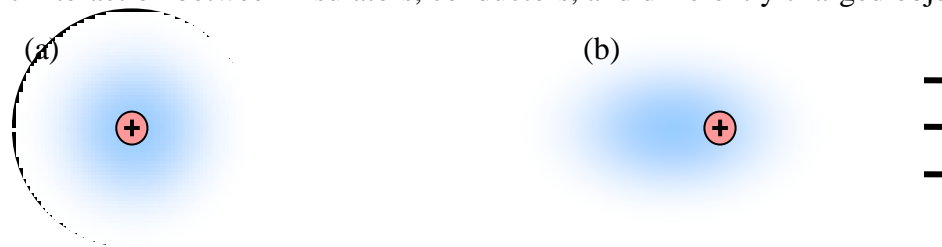


Figure 1 Depiction of polarization of an atom. In (a), a neutral atom is shown with dense, positively charged nucleus and a negatively charged electron “cloud” (depicted by the shading). In (b), when other charges are nearby, the electron cloud distorts due to electrostatic forces, and we say that the atom has become polarized (or equivalently, we say that a **dipole moment** has been induced). The distortion is greatly exaggerated here.

In the second portion of today's experiment, we will use the apparatus provided to verify quantitatively the inverse-square law dependence of Coulomb's Law (Eq. 1). The general setup of this apparatus is depicted in Figure 2 below. A pith ball with a conductive coating is suspended by very light strings inside an enclosure which helps to limit the effects of stray air currents. In this portion of the experiment, you will charge both pith balls with the same type of charge, and hence they should repel each other. When both balls are at rest, we know that the system is in equilibrium, and so we can apply our knowledge of Newton's 1st Law and the geometry of the situation to help us relate the positions of the balls and the forces between them.

Based on the free-body diagram presented for you in Figure 2, we can determine the net force in the x - and y -directions. When the system is in equilibrium, the net force in any direction should be zero. So, we can write:

$$F_{x \text{ net}} = 0 = F_e - T \sin \theta$$

$$F_{y \text{ net}} = 0 = T \cos \theta - mg$$

Rearranging this, we find:

$$F_e = T \sin \theta$$

$$mg = T \cos \theta$$

If we divide the upper equation by the lower, we find:

$$\frac{F_e}{mg} = \tan \theta$$

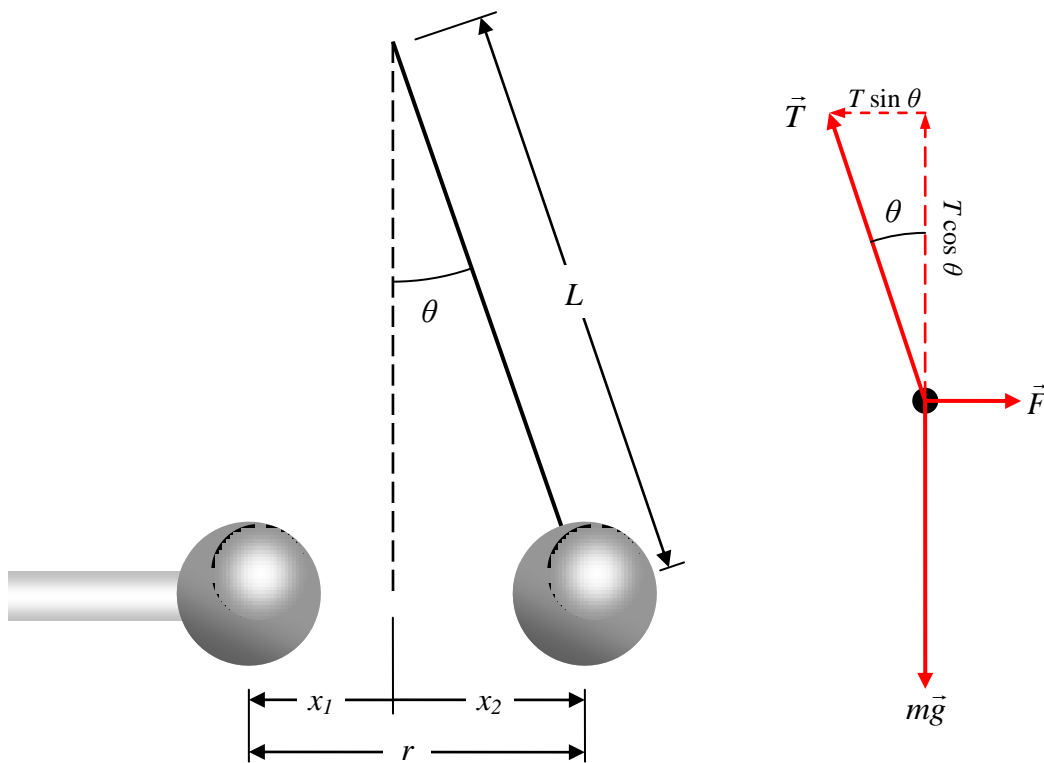


Figure 2 Schematic of Coulomb's Law apparatus and associated free-body diagram for hanging mass.

Finally, for the small angles which we will be dealing with in this experiment, we can use the small-angle approximation $\tan \theta \approx \sin \theta$. From Figure 2, we can see that $\sin \theta = x_2 / L$. Thus, solving for the electric force F_e , we find

$$F_e = \frac{mg}{L} x_2. \quad (\text{Eq. 2})$$

If we could accurately measure the mass of the suspended ball, and the length of the string supporting it (and knowing the acceleration due to gravity at the surface of the earth, g), we could determine the electrostatic force F_e by measuring the horizontal displacement of the suspended ball, x_2 . For our purposes, it will be sufficient to simply note that the electrostatic force is directly proportional to this horizontal displacement. According to Coulomb's Law (Eq. 1) and the relationship we derived in Eq. 2, we can see:

$$F_e \propto \frac{1}{r^2} \quad \text{or} \quad x_2 \propto \frac{1}{(x_2 + x_1)^2}. \quad (\text{Eq. 3})$$

The verification of this relationship will be our goal in Activity 2 of this lab.

Name: _____

Date: _____

Name: _____

Lab Sect.: _____

Name: _____

Lab Instructor: _____

Directions:

Note: If you are not careful while handling the materials in the activity, you may obtain inconsistent results. Please follow the directions as faithfully as possible! Also, do not throw out empty tape dispensers; we can refill them so other students can use them.

Activity 1: Exploring static electricity qualitatively with sticky tape

The following experiments will need you to use strips of tape that are about 20 cm long. Each time you are asked to use a strip of tape, fold over one end to form a non-sticky handle for easy handling, as in Figure 3.

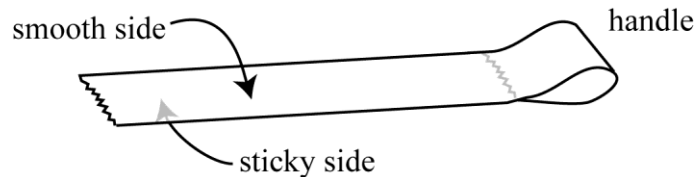


Figure 3 Preparing a strip of tape by making a non-stick handle

Stick a 20-cm strip of tape on the lab table, sticky side *down*. This tape forms a standard base for making a “T” (for “Top”) strip. Stick another strip of tape on top of this one, smoothing it down well with your thumb and fingers. Using a pen or marker, label the handle of this strip with a “T”. With a quick motion, peel off the T-strip from the base strip. Test whether this T-strip is attracted to your finger – if it is not, remake the tape. Once you know how to make a T-strip, prepare two such strips.

Holding each one by the handle, bring the slick (non-sticky) sides of the two strips toward each other. Observe what happens, noting how the behavior changes with the distance between the strips.

Q1. Describe and explain what happens as the two T-strips are brought closer together.

Q2. What **qualitative** conclusions can you draw about the relationship between electric force and the distance between charges? How do your observations relate to Coulomb’s Law?

Once you have made certain the pair of strips is neutral, peel the pair apart to get a separate T-strip and B-strip. Let someone else in your team make another pair of B and T strips in the same manner. As before, your aim is to study the interaction between these different strips by bringing the slick sides towards each other.

Q5. Summarize the interactions between two T-strips, between two B-strips and between a T-strip and a B-strip.

T-T interaction:	(a) no interaction	(b) they attract	(c) they repel
B-B interaction:	(a) no interaction	(b) they attract	(c) they repel
T-B interaction:	(a) no interaction	(b) they attract	(c) they repel

Q6. In Q4, you determined the sign of charge on the T-strip. Based on that sign, and the interactions above, what is the sign of the B-strip? Describe how you could use the same method you described in Q4 to verify the sign of the B-strip, and do so.

Q7. Given that you made certain that the pair of tape strips was neutral before separating the strips, is it possible to create a T-strip and B-strip that repel each other? Explain why or why not.

Testing charged strips with conductors and insulators

Make another pair of T and B strips. Suspend them from the edge of the table as shown in Figure 4 below.

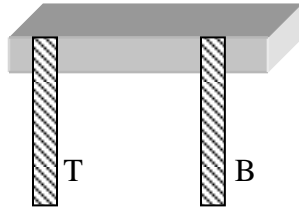


Figure 4 Hanging T-strip and B-strip from edge of table

Hold a conductor (*e.g.* a metallic object such as a key) near each tape and observe what happens. (Make sure that you do not allow the conductor to touch the tape.)

Q8. Describe the interaction between the conductor and each strip.

Conductor/T-strip interaction:	(a) no interaction	(b) they attract	(c) they repel
Conductor/B-strip interaction:	(a) no interaction	(b) they attract	(c) they repel

Q9. Using a few sentences and a clear sketch, explain these observations. Your sketch should show how the different charges in the conductor (*i.e.*, electrons & protons) are distributed when the conductor is far away from a charged tape strip and when it is close to a charged tape strip.

Sketch:

Now, hold an insulator (*e.g.* the end of a plastic pen or the glass rod, provided that it has been discharged) near each tape and observe what happens. (Make sure that you do not allow the insulator to touch the tape.)

Q10. Describe the interaction between the insulator and each strip.

Insulator/T-strip interaction:	(a) no interaction	(b) they attract	(c) they repel
Insulator/B-strip interaction:	(a) no interaction	(b) they attract	(c) they repel

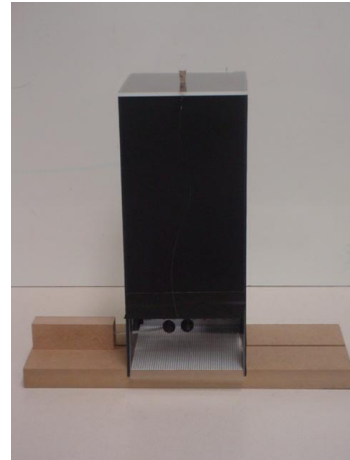
Q11. Using a few sentences and a clear sketch, explain these observations. Your sketch should show how the different charges in the insulator (*i.e.*, electrons & protons) are distributed when the insulator is far away from a charged tape strip and when it is close to a charged tape strip.

Sketch:

Q12. Based on your observations, which was stronger: the interaction between the conductor and the tape strips or the interaction between the insulator and the tape strips? Explain this observation.

Activity 2: A quantitative study of Coulomb's Law

Now, we will set aside the sticky tape and turn our attention to the Coulomb's Law apparatus. Our goal with this device is again to confirm that the electrostatic force between two charged bodies is inversely proportional to the *square* of the distance between them. For ease of calculation, we will adopt a horizontal coordinate system in which the original, undisturbed equilibrium position of the *hanging* ball is used as our origin. (See Figure 2 again for the geometry involved and Figure 5 for a depiction of our x -coordinate system.) Again, we will label the horizontal position of the block-mounted ball with respect to this origin as x_1 , and the horizontal position of the suspended ball as x_2 . It will not be easy to measure either x_1 or x_2 directly, but we can relate easy-to-make measurements to the ones we want.



To begin, we will measure the position of the block-mounted ball by measuring the position of one end of the block itself. (*Note:* in the explanation which follows, it is assumed that you will be moving the block on the left-hand side of the apparatus.)

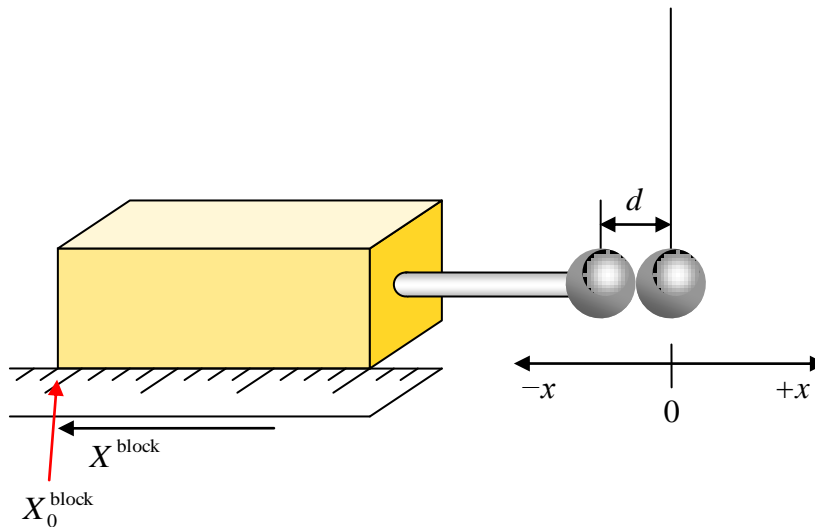


Figure 5 Finding the block's position when the block-mounted ball is just touching the suspended ball.

1. Measure the diameter d of the block-mounted pith ball and record it below:

Diameter of conducting spheres (d): _____

2. Touch both pith balls (the block-mounted ball and the suspended one) with your finger to ensure that both are neutral.
3. Slide the block in its groove into the apparatus, so that the block-mounted ball *just* barely comes into contact with the suspended ball without displacing it (see Figure 5).

When the block is at this position (which we will call X_0^{block}), we know that the block-mounted ball will be at position $x_1 = -d$ (i.e., its center of mass will be one ball-diameter away from the center of mass of the suspended ball).

4. With the block-mounted ball just barely touching the suspended ball, record the position of the block:

“Zero” position of the block (X_0^{block}): _____

If we move the block farther to the left, the block-mounted ball’s position with respect to our origin will become more negative. If we move the block farther to the right, the ball’s position will become more positive. Using these notions, we can write down an expression for the block-mounted ball’s center-of-mass position (x_1) as a function of the block’s position measured via the measuring tape (X^{block}) as

$$x_1 = -\left|X^{\text{block}} - X_0^{\text{block}}\right| + d \quad (\text{Eq. 4})$$

You should verify for yourself that this expression satisfies the conditions we just described. To summarize: we will record the block-mounted ball’s position by measuring the position of the block itself via the measuring tape provided on the outside of the apparatus.

How do we determine the suspended ball’s position? At the back of the Coulomb’s law apparatus, a separate ruler is mounted below a mirror. If you try to line up the ball with the ruler at the back of the apparatus, you’ll notice that you can get drastically different position readings if you move your head left or right. This phenomenon is called **parallax**, and occurs anytime you try to compare the transverse positions of objects located different distances away from you. To help minimize the effect of the parallax, we can try to *line up the edge of the ball directly with its reflection in the mirror*. When we do this, we’re looking dead-on at the edge of the ball, and can trust our reading from the ruler at the back of the apparatus.

So, to find the position of the suspended ball at any point in time, we just line up the edge of the ball with its reflection in the mirror, and look to see where this lines up with the ruler. This position we can call X^{mirror} . When the ball is hanging straight down, we’ll say that its **edge** is at position X_0^{mirror} (which corresponds to the center of mass being at a position of $x_2 = 0$). From these considerations then, we find that the suspended sphere’s center-of-mass position (x_2) can be determined from the measurement with respect to the ruler at the back of the apparatus by

$$x_2 = \left|X^{\text{mirror}} - X_0^{\text{mirror}}\right|. \quad (\text{Eq. 5})$$

5. Record the “zero” position of the edge of the suspended ball when it hangs vertically downward, as measured with the no-parallax method described above with respect to the ruler in the back of the apparatus.

“Zero” position of edge of the suspended ball (X_0^{mirror}): _____

To facilitate the analysis of the data, and to acclimatize you to using common software tools for this task, we have provided a spreadsheet with the necessary calculations (*e.g.* Eqs. 4 and 5) already provided. Take this opportunity to open the “[Static Electricity.xls](#)” spreadsheet and enter your measurements for d , X_0^{block} , and X_0^{mirror} in the spaces provided. Thoroughly read the directions below on how to perform the experiment (Steps 6 through 11), and then collect your data in the Excel spreadsheet.

6. Rub your PVC pipe vigorously with the rabbit fur provided to charge the pipe.
7. Charge the block-mounted ball *by induction*. To do so, first move the block and ball away from the Coulomb’s Law apparatus. Bring the charged PVC pipe near, but not touching the block-mounted ball, to within a few centimeters distance. Touch the block-mounted ball with your finger. Remove your finger from the ball and then remove the PVC pipe from the vicinity of the ball. The block-mounted ball has now been charged by induction.
8. Slide the block and ball back into the groove in the Coulomb’s Law apparatus (being careful to not let the ball come into contact with any surface.)
9. Slowly move the block-mounted ball into the apparatus until you see the suspended ball swing toward it, touch it, and then rapidly swing away. At this point, both the block-mounted ball and the suspended ball are charged. Move the block-mounted ball 0.5 cm back away from this position.
10. Slide the block farther into the apparatus as far as you can (but not so far as to push the block-mounted ball into the suspended ball again; they should still be separated by some distance.)
11. Humidity in the air and stray air currents will gradually discharge your spheres, so it best to work quickly. Using the Excel spreadsheet provided, record the positions of the block and the suspended ball as you slide the block in 2- or 3-mm increments back out of the apparatus. Take at least 10 or so readings.

Once you have collected your data, proceed with the analysis by answering the following questions and providing graphs of your data where requested.

Q13. In step 7 of the procedure, you charged the block-mounted ball by *induction*. Sketch the distribution of charges (*i.e.* protons and electrons) on the pith ball, your finger, and the PVC pipe when (a) you've just brought the PVC pipe near the ball, (b), you've just touched your finger to the ball, (c) you remove your finger, and (d) when you move the PVC pipe away from the ball.

(a) PVC brought near to ball	(b) Finger touches ball
(c) Finger moves away from ball	(b) PVC moved away from ball

Q14. In step 9 of the procedure, you charged the suspended ball by *conduction*. Sketch the net distribution of charges (*i.e.* protons and electrons) on both balls, shortly before they touch, at the moment they touch, and after the suspended ball has swung away.

(a) Block-mounted ball attracts suspended ball	(b) Both balls touch
(c) Suspended ball has swung away	

12. You should now attempt to verify (Eq. 3) (the statement that the electrostatic force between two charged point particles is inversely proportional to the square of the distance between the charges). To do so, create a plot of the force versus distance (F_e vs. r). Include a copy of this plot in your lab report.

Q15. Does your plot of force versus distance support the statement that the electrostatic force is inversely proportional to the square of the distance between the charges? Can you quantify to what extent the data fits or fails to fit this model?

13. We now wish to “linearize” our data by plotting the force versus the inverse of the distance squared (F_e vs. $1/r^2$). In your Excel file, create a new column of $1/r^2$. Create a plot of force versus the inverse of the distance squared, and add a linear trendline in order to quantify the extent to which your data fits the prescribed model (Eq. 3). Include a copy of this plot in your lab report.

Q16. Is it easier to confirm or deny the relationship described in Eq. 3 via this plot than it was with the plot of F_e vs. r ? Why?
